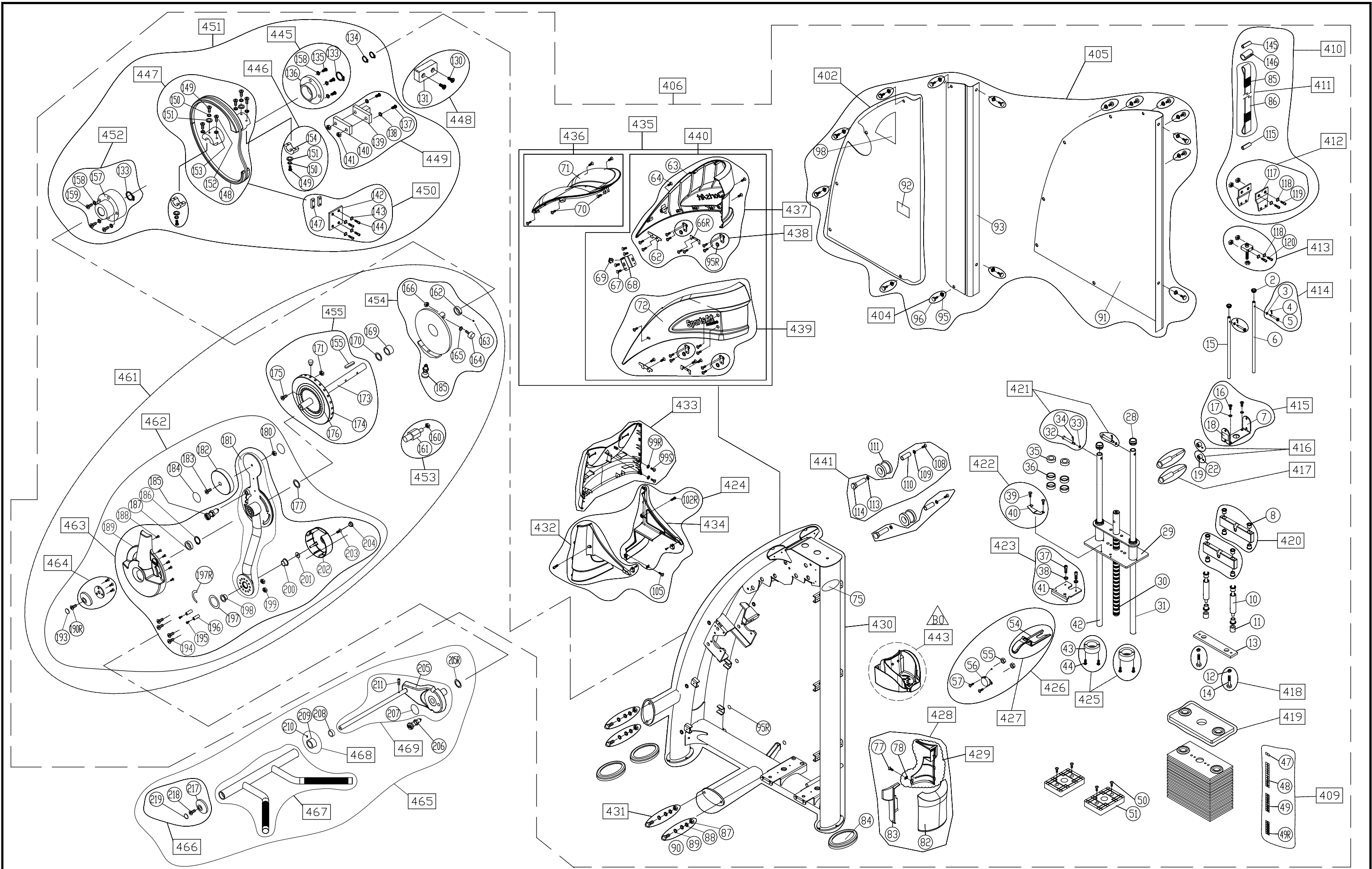


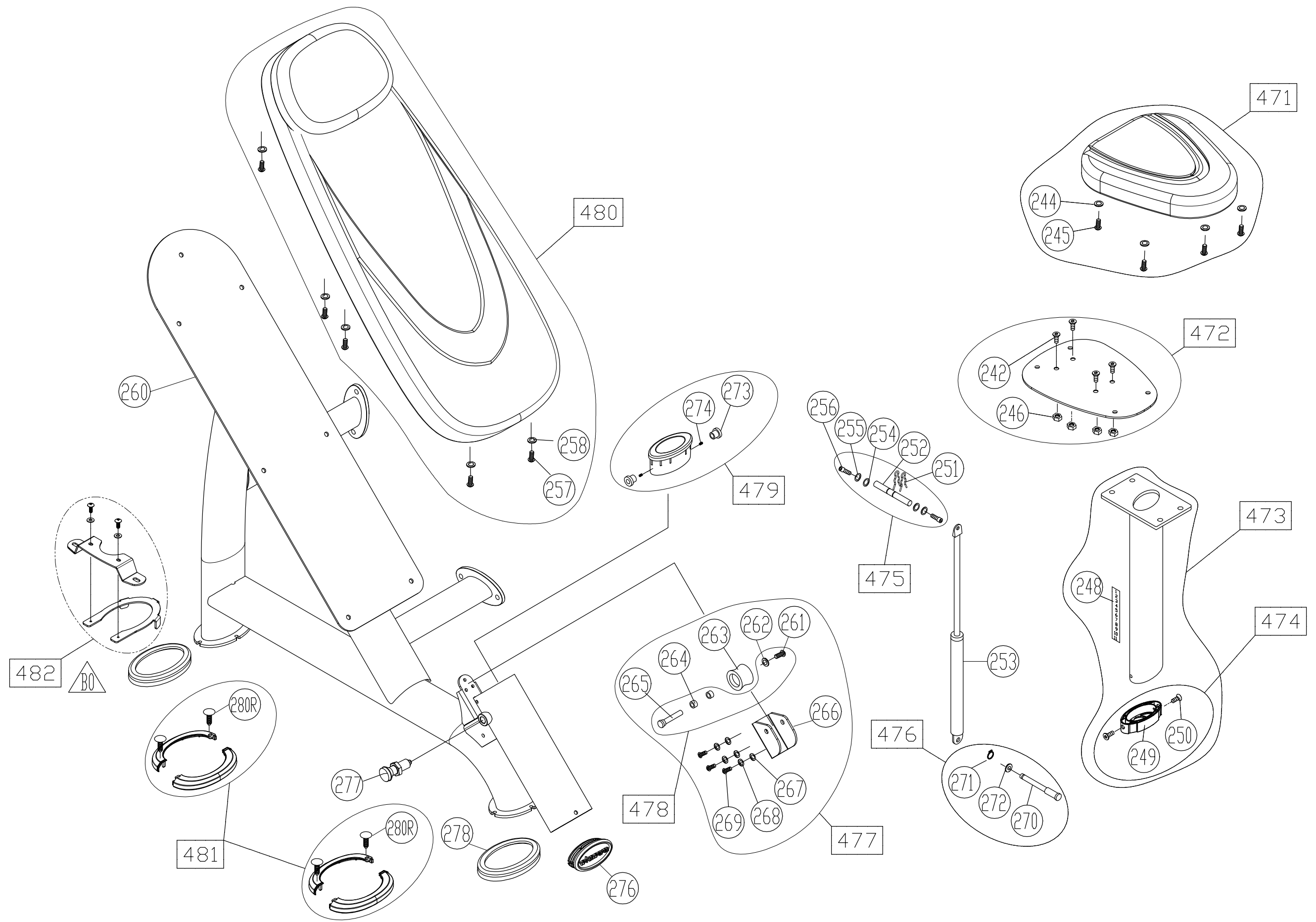
BBL	Description	QTY	Part Number	BBL	Description	QTY	Part Number
001	OWNER'S MANUAL	1	S923-001	068	COVER BRACKET	1	S915-068
002	NOISE SUPPRESSOR	4	A983-23	069	SCREW INSERT	1	000-076-820
003	WASHER - R (D15*D7.5*T2)	2	003-308-010	070	SCREW - M/P (M4*L12)	21	002-210-003
004	COTTER PIN	2	004-405-031	071	TOP COVER	1	091-730-316
005	PIN	2	090-553-031	072	TOP COVER - LEFT	1	191-730-325
006	STACK GUIDE TUBE	1	A912-12	075	STICKER - WARNING	1	DF-101-020D
007	WEIGHT PLATE BRACKET	1	190-510-24L	077	SCREW - M/P (M4*L12)	1	002-210-003
008	GUIDE RING	14	A912-15	078	SCREW CLIP - (M4-L16)	1	1250-111
010	STACK STANDOFF	2	A923-17	082	REAR LEG COVER - BACK	1	S912-082
011	RUBBER CUSHION	2	A912-17	083	REAR LEG COVER - LEFT	1	S912-083
012	NUT - H (M10*P1.5*H6)	2	001-102-140	084	RUBBER FOOT	3	A911-10
013	ADJUSTMENT PLATE - GREY	1	190-510-27L	085	ISOLATOR	2	S912-085
014	STOPPER	2	090-553-020	086	KEVLAR BELT - (65")	1	100-005-040
015	STACK GUIDE TUBE	1	A912-10	087	NUT - H/N (M10)	4	001-101-030
016	SCREW - M/H (M10*P1.5*L15)	2	002-220-010	088	WASHER - F (D16*D10.2*T1.0)	8	003-301-141
017	WASHER - SP (M10)	2	003-302-012	089	WASHER - SP (M10)	4	003-302-008
018	PLATE STICKER - 1.5-3.0KG (GREEN)	1	S912-018	090	SCREW - H (M10*P1.5*L35)	4	S972-144
019	MAGNET SOCKET	2	090-513-200	091	REAR COVER	1	S912-091
022	SCREW - H (M5*L6)	2	002-204-062	092	STICKER - WARNING	1	DF-101-008
028	BUSHING	2	A911-36	093	FRONT COVER - SMALL	1	S912-093
029	UPPER COUNTERWEIGHT	1	A911-40	095	COVER WASHER - (D21.5*10.5)	15	DF-101-030A
030	24-POSITION TUBE	1	A918-32	095R	SINGLE-SIDED TAPE	19	000-065-350
031	LONG STACK GUIDE TUBE	1	A912-28	096	SCREW - P (M6*P1.0*L20)	15	002-213-035
032	PIN	2	090-553-041	098	STICKER - USAGE	1	S923-098
033	WASHER - R (D20*D11.1*T2)	2	003-308-011	099R	WASHER - F (D20*D5.2*T3.0)	2	103-301-005
034	COTTER PIN	2	004-405-031	099S	SCREW - M/P (M4*L12)	2	002-210-003
035	CUSHION RING	2	A911-37	102R	SCREW - B/H (M6*P1.0*L20)	2	002-205-620
036	GUIDE RING	4	A911-38	105	SCREW - M/P (M4*L12)	1	002-210-003
037	SCREW - B/H (M8*P1.25*L18)	2	002-205-813	108	SCREW - B/H (M8*P1.25*L20)	2	002-205-820
038	WASHER - SP (M8*T2.0)	2	003-302-006	109	WASHER - F (D26*D8.3*T3)	2	003-301-027
039	SCREW - B/H (M5*P0.8*L10)	2	002-205-510	110	BUSHING	2	090-515-030
040	CABLE BRACKET	1	A911-055	111	BELT PULLEY	2	A911-03
041	SET FORK	1	A912-26	113	O-RING	2	000-076-688
042	STACK GUIDE TUBE	1	A912-21	114	BELT PULLEY AXLE	2	090-513-050
043	CUSHION RING	2	A911-41	115	BELT ROTATOR PIN A	1	S912-115
044	SCREW - B/H (M5*P0.8*L25)	4	S972-030	117	BELT TIGHTENING HARDWARE A	2	190-510-14L
047	PLATE STICKER - 5KG (GREEN)	1	S912-047	118	WASHER - SP (M8*T2.0)	4	003-302-006
048	PLATE STICKER - 10-60KG (GREEN)	1	S911-048	119	SCREW - B/H (M8*P1.25*L25)	2	002-205-822
049	PLATE STICKER - 65-100KG (GREEN)	1	S911-049	120	SCREW - B/H (M8*P1.25*L40)	2	002-205-842
049R	PLATE STICKER - 105-130KG (GREEN)	1	S918-049R	130	SCREW - P (M5*P0.8*L12)	2	002-211-255
050	SCREW - B/H (M6*P1.0*L25)	4	002-205-622	131	RUBBER BLOCK	1	A912-50
051	WEIGHT STACK CUSHION	2	A911-48	133	SNAP RING - (RTW-55)	2	004-401-018
054	SELECTOR FORK - NO CORD	1	190-553-052	134	SNAP RING - (STW-30)	2	004-401-011
055	NUT - H (M4*P0.7)	2	001-102-090	135	SCREW - B/H (M8*P1.25*L20)	3	002-205-820
056	RETRACTING CABLE	1	DF-100-021	136	BEARING BLOCK	1	090-813-131
057	SCREW - P (M4*P0.7*L25)	2	002-211-080	137	SCREW - B/H (M8*P1.25*L35)	2	002-230-831
062	COVER BRACKET	2	191-710-230	138	WASHER - SP (M8)	2	003-302-010
063	TOP COVER - RIGHT	1	091-730-335	139	STOPPER CUSHION	1	191-250-05L
064	SCREW - M/P (M5*0.8*L15)	6	E862-224	140	STOPPER PLATE	1	190-810-11L
066R	COVER BRACKET	2	191-710-341	141	NUT - H/N (M8)	2	001-101-080
067	SCREW - M/P (M5*L12)	4	002-210-036	142	BELT TIGHTENING HARDWARE B	1	195-910-03L

BBL	Description	QTY	Part Number	BBL	Description	QTY	Part Number
143	WASHER - SP (M6*T1.5)	4	003-302-002	201	WASHER - (D36*D8.5*T3.0)	1	103-301-154
144	SCREW - B/H (M6*P1.0*L45)	4	002-230-640	202	ROTATING ARM COVER - GREY	1	090-830-103
145	BELT ROTATOR PIN B	1	S912-145	203	SCREW - B/H (M8*P1.25*L20)	1	002-205-820
146	BELT FIXTURE	1	S912-146	204	SCREW COVER	1	C570R-59
147	PIN	2	190-510-43L	205	ROTAING ARM - SMALL - GREY	1	192-350-04K
148	CAM	1	A923-71	205R	RING	2	S925-196
149	SCREW - B/H (M10*P1.5*L35)	4	002-230-035	206	ADJUSTMENT KNOB	1	A911-28
150	WASHER - SP (M10)	4	003-302-008	207	STICKER - ROUND	1	P731-148
151	WASHER - F (D21*D10.5*T2)	4	003-301-001	208	BUSHING	1	S923-208
152	SCREW - B/H (M8*P1.25*L45)	4	002-230-840	209	BUSHING	1	A923-56
153	WASHER - SP (M8)	4	003-302-010	210	SCREW - H (M5*L5)	1	002-204-064
154	TIGHTNESS BRACKET	2	A912-55	211	SCREW - B/H (M8*L12)	1	C521M-143
155	KEY	1	A912-57	217	END CAP	1	092-315-030
157	BEARING BLOCK	1	090-813-082	218	BOLT - H (10MM M8*L20)	1	002-206-073
158	WASHER - SP (M8)	6	003-302-010	219	STICKER - ROUND	1	E850-177
159	SCREW - B/H (M8*P1.25*L35)	3	002-230-831	242	SCREW - B/H (M8*P1.25*L20)	4	002-202-040
160	NUT - H (M16*P1.5*H8)	1	001-102-160	244	WASHER - SP (M8)	4	003-302-010
161	AXLE	1	090-813-061	245	SCREW - M/H (M8*P1.25*L25)	4	002-203-061
162	BUSHING	1	S923-162	246	NUT - H/N (M8)	4	001-101-080
163	SCREW - I/H (M6*L6)	1	002-204-073	248	STICKER - POSITION	1	DF-103-208
164	STOPPER FOOT	1	A921-54	249	SEAT POST SHEATH	1	A912-44
165	WASHER - (D26*D10.3*T3.0)	1	103-301-116	250	SCREW - B/H (M5*P0.8*L10)	2	002-205-510
166	NUT - H (M10*P1.5*H6)	1	001-102-140	251	COTTER PIN - (1.2*22)	2	004-405-041
169	BUSHING	1	A923-105	252	AXLE	1	092-313-091
170	WASHER - F (D40*D30.5*T2.0)	1	190-810-130	253	SEAT SHOCK	1	S912-221
171	NUT - H (M10*P1.5*H6)	4	001-102-140	254	PLASTIC RING	2	092-330-060
173	ROTATOR	1	090-850-07F	255	WASHER - F (D20*D5*T1.0)	2	003-301-020
174	STICKER - ROTATOR	1	S923-174	256	SCREW - P (M5*P0.8*L6)	2	002-211-250
175	SCREW - B/H (M10*L15)	2	A981-22	257	SCREW - M/H (M8*P1.25*L25)	7	002-203-061
176	STICKER - ROTATOR	1	S961-252	258	WASHER - SP (M8)	7	003-302-010
177	CAP	1	A923-103	260	SEAT FRAME - GREY	1	192-750-02K
180	NUT - H (M10*P1.5*H6)	1	001-102-140	261	SCREW - B/H (M6*P1.0*L15)	1	002-205-614
181	ROTATING ARM - GREY	1	S923-181G	262	WASHER - F (D20*D6.3*T1.5)	1	003-301-043
182	WEIGHT PLATE - 4KG	2	DF-108-099	263	ROLLER	1	A923-51
183	SCREW - B/H (M10*L45)	1	002-205-340	264	BUSHING - METAL	2	087-515-250
184	STICKER - ROUND	2	P731-148	265	AXLE	1	092-313-040
185	ADJUSTMENT KNOB	2	A911-28	266	ROLLER BRACKET - GREY	1	S923-266G
186	SNAP RING - (RTW-47)	1	004-401-028	267	WASHER - F (D20*D6.3*T1.5)	3	003-301-043
187	BUSHING	1	A923-98	268	WASHER - SP (M6)	3	003-302-011
188	SCREW - B/H (M4*L12)	6	002-208-050	269	SCREW - B/H (M6*P1.0*L15)	3	002-205-614
189	ROTATING ARM COVER - GREY	1	090-830-093	270	ADJUSTMENT PIN	1	090-513-302
190R	SCREW - B/H (M8*P1.25*L20)	1	002-205-820	271	SNAP RING - (6MM)	1	004-402-012
193	STICKER - ROUND	1	E875-507	272	WASHER - F (D17*D8.3*T1)	1	003-301-044
194	SCREW - B/H (M4*L12)	4	002-208-050	273	BUSHING	2	092-313-080
195	SCREW - B/H (M6*P1.0*L15)	2	002-205-613	274	SCREW - M/P (M5*0.8*L12)	2	S972-174
196	BUSHING	2	090-813-190	276	ENDCAP	1	A923-76
197	STICKER - ROTATOR	1	090-663-031	277	ADJUSTMENT KNOB	1	A921-55
197R	STICKER - ROTATOR	1	095-763-030	278	RUBBER FOOT	2	A911-10
198	BUSHING	1	A956-103	280R	PASTIC RIVET	4	000-076-990
199	NUT - H/N (M6*P1.0*6)	2	001-101-071	402	FRONT COVER - LARGE	1	S923-402
200	BUSHING	1	S923-200	404	COVER HARDWARE	15	S912-404

BBL	Description	QTY	Part Number	BBL	Description	QTY	Part Number
405	COVER ASSEMBLY	1	192-791-050	465	HANDLEBAR ASSEMBLY - GREY	1	S923-465G
406	MAIN FRAME ASSEMBLY - GREY	1	192-791-06K	466	END CAP	1	DF-105-083
409	PLATE STICKER SET	1	193-691-190	467	HANDLEBAR - GREY	1	192-791-67K
410	BELT & HARDWARE	1	S923-410	468	BUSHING	1	S923-468
411	KEVLAR BELT & ISOLATOR - (65")	1	S923-411	469	ROTAING ARM - SMALL - GREY	1	S923-469G
412	BELT TIGHTENING HARDWARE A	1	A911-057	471	SEAT CUSHION - BLACK	1	S912-471B
413	ADJUSTMENT HARDWARE	1	A911-35	472	SEAT CUSHION FRAME - GREY	1	S912-472
414	PIN	2	A912-09	473	SEAT POST	1	S923-473
415	WEIGHT PLATE BRACKET	1	S912-415	474	SEAT POST SHEATH	1	S912-474
416	STACK PIN MAGNET	2	A912-23	475	PIN	1	A923-77A
417	STACK ADJUSTMENT PIN	2	190-591-050	476	PIN	1	S912-476
418	STOPPER	2	A922-63	477	ROLLER & BRACKET - GREY	1	S923-477G
419	WEIGHT PLATE - 5KG	23	S911-419	478	AXLE	1	S923-478
420	STACK COUNTERWEIGHT	2	S912-420	479	END CAP	1	S923-479
421	PIN	2	A912-25	480	BACK CUSHION - BLACK	1	S915-477B
422	CABLE BRACKET	1	S972-406	481	RUBBER FOOT COVER	2	S911-430
423	WEIGHT PLATE BRACKET	1	S912-423	482	GROUND ANCHORS	1	191-791-960
424	FRONT LEG COVER ASSEMBLY	1	S912-424				
425	CUSHION RING	2	S911-425				
426	SELECTOR FORK - W/CORD	1	A911-50				
427	SELECTOR FORK - NO CORD	1	190-591-530				
428	REAR LEG COVER ASSEMBLY	1	S912-428				
429	REAR LEG COVER - RIGHT	1	S912-429				
430	MAIN FRAME - GREY	1	192-791-30K				
431	FRAME HARDWARE	4	S911-432				
432	FRONT LEG COVER - LEFT	1	S912-432				
433	FRONT LEG COVER - FRONT	1	S912-433				
434	FRONT LEG COVER - RIGHT	1	S912-434				
435	TOP COVER ASSEMBLY	1	191-791-350				
436	TOP COVER - TOP	1	S912-436				
437	TOP COVER - RIGHT	1	S912-437				
438	BRACKET	4	S915-438				
439	TOP COVER - LEFT	1	S915-439				
440	TOP COVER - LEFT & RIGHT	1	191-791-400				
441	ROLLER AXLE	2	S912-441				
443	BOTTLE HOLDER (NEW)	1	191-791-430				
445	BEARING BLOCK	1	A912-53				
446	TIGHTNESS BRACKET	2	S912-446				
447	CAM	1	S923-447				
448	RUBBER BLOCK	1	S912-448				
449	STOPPER SET	1	S912-449				
450	BELT BRACKET	1	A923-08				
451	CAM ASSEMBLY	1	S923-451				
452	BEARING BLOCK	1	A912-58				
453	CAM AXLE	1	A923-63				
454	ADJUSTMENT ROTATOR - GREY	1	190-891-181				
455	ROTATOR ASSEMBLY	1	A923-102				
461	ROTATING ARM ASSEMBLY - GREY	1	192-391-063				
462	ROTATING ARM - GREY	1	S923-462G				
463	ROTATING ARM - GREY	1	190-891-161				
464	END CAP - GREY	1	S915-479				



CHANGE DATE	CHANGE DESCRIPTION	CHANGE NO.	NAME	SPORTSART FITNESS	DRAWN BY	UNITS	MM	SALES BLOW UP DIAGRAM	DIAGRAM NO.	GHS-F101B-B
2016.02.01	B0 水壺架修改造型, 取消(76), 新增(443)	05-20150906M	蔡鴻興	SportsArt FITNESS RESTRICTED USAGE , PLEASE DON'T FORWARD TO ANYONE WHO ISN'T AUTHORIZED		QTY	1	XX	MODEL	S923
					VERIFIED BY	VERSION	B0			
						RATIO	1:16			



CHANGE DATE	CHANGE DESCRIPTION	CHANGE NO.	NAME	 RESTRICTED USAGE , PLEASE DON'T FORWARD TO ANYONE WHO ISN'T AUTHORIZED	DRAWN BY	UNITS	MM	SALES BLOW UP DIAGRAM	DIAGRAM NO.	GHS-F101C-B	
2015.12.11	BO 增加機台固定性, 故新增 482	05-20151205M	鄭宜峰		VERIFIED BY	QTY	1				S923
						VERSION	B0	XX		MODEL	
						RATIO	1:8				