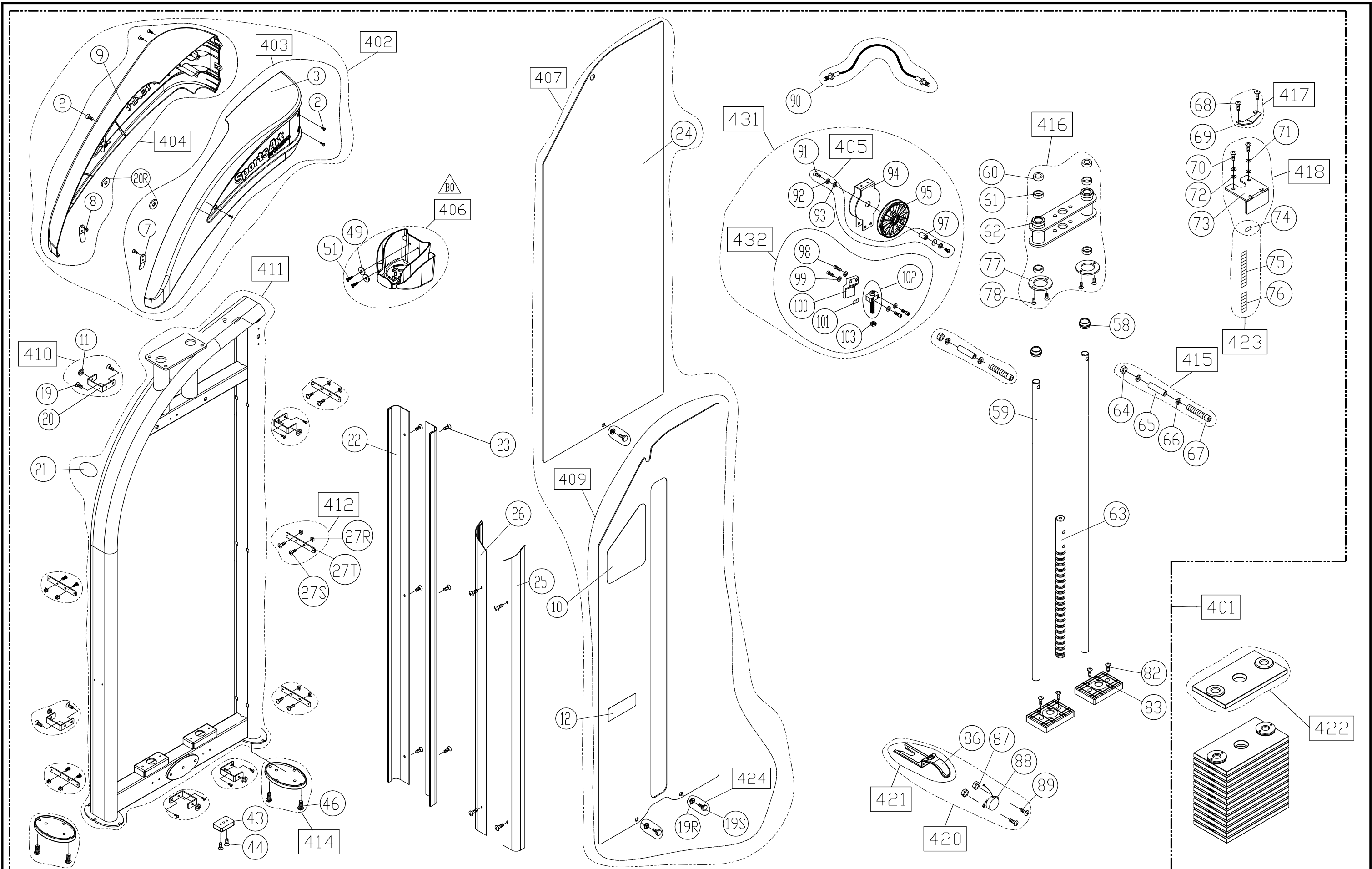
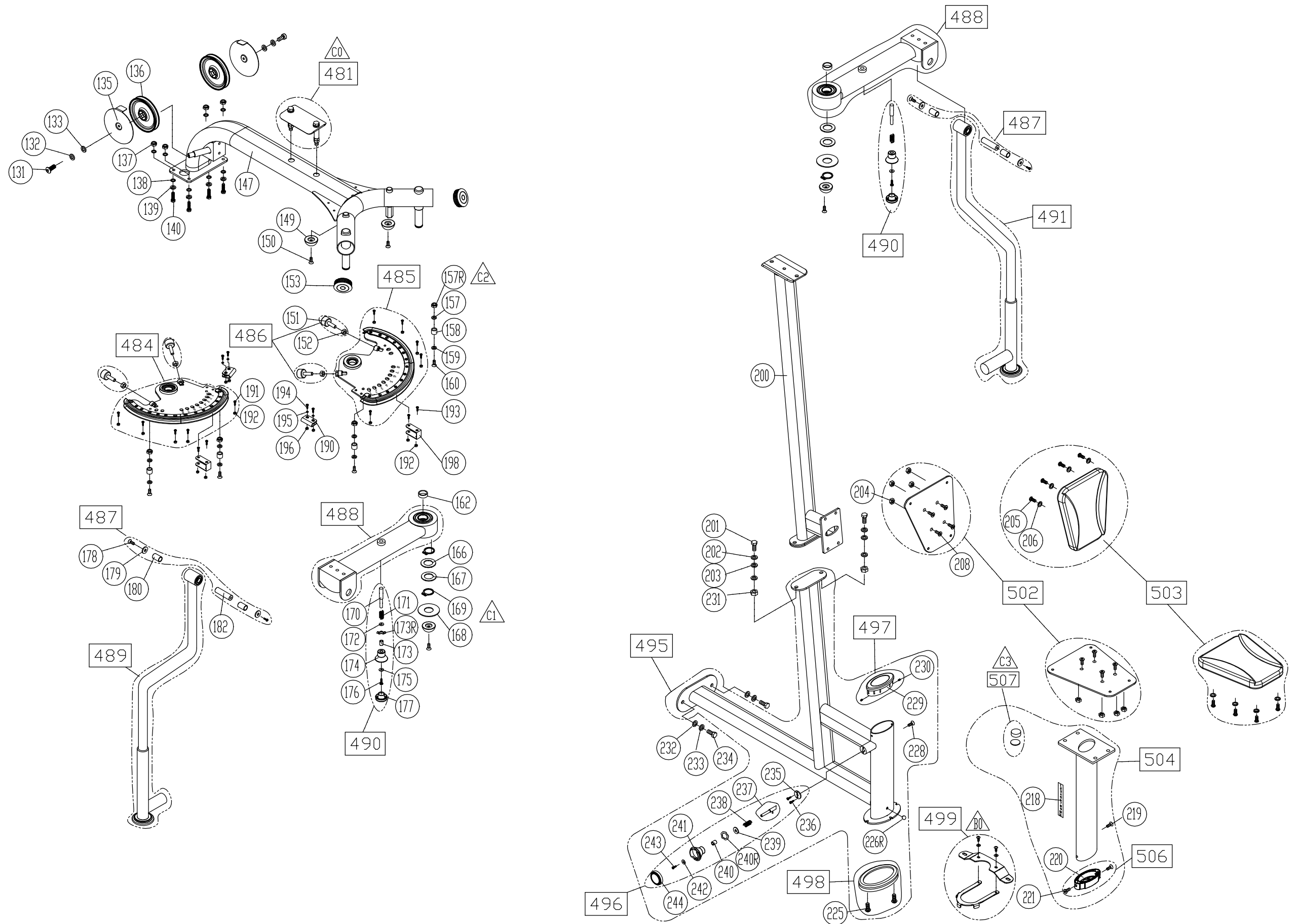


BBL	Description	QTY	Part Number	BBL	Description	QTY	Part Number
001	OWNER'S MANUAL	1	P722-001	088A	RETRACTING CABLE	1	DF-100-021
002	SCREW - P (M6*P1.0*L12)	6	002-211-282	089	SCREW - P (M4*P0.7*L25)	2	002-211-080
003	TOP COVER - RIGHT	1	P711-003	090	STRENGTH CABLE	1	P722-090
007	BRACKET	2	105-710-150	091	SCREW - M/H (M6*P1.0*L12)	2	002-203-027
008	SCREW - M/P (M4*L12)	2	002-210-003	092	WASHER - SP (M6)	2	003-302-011
009	TOP COVER - LEFT	1	P711-009	093	WASHER - F (D20*D6.3*T1.5)	2	003-301-043
010	STICKER - USAGE	1	P722-010	094	PULLEY BRACKET - GREY	1	S972-018
011	SINGLE-SIDED TAPE	5	000-065-350	095	PULLEY	1	A971-08
012	STICKER - WARNING	1	DF-101-008	097	AXLE	1	DF-100-032
019	SCREW - M/H (M6*P1.0*L12)	10	002-203-027	098	SCREW - B/H (M8*P1.25*L15)	4	002-205-812
019R	COVER WASHER - (D21.5*10.5)	3	DF-101-030A	099	WASHER - SP (M8)	4	003-302-010
019S	SCREW - P (M6*P1.0*L20)	3	002-213-035	100	BRACKET	1	193-010-360
020	BRACKET	5	105-710-210	101	TAPE - FOAM - SINGLE SIDED	1	000-065-137
020R	FOAM RING	2	005-757-720	102	BELT ADJUSTMENT	1	A93-06
021	STICKER - WARNING	1	DF-101-020D	103	NUT - H (M10)	1	001-102-141
022	COVER FRAME - GREY	2	P711-022G	131	SCREW - M/H (M6*P1.0*L12)	2	002-203-027
023	SCREW - M/P (M5*0.8*L8)	10	002-209-130	132	WASHER - SP (M6)	4	003-302-011
024	REAR COVER	1	P722-024	133	WASHER - F (D20*D6.3*T1.5)	2	003-301-043
025	COVER FRAME - GREY	1	P722-025G	135	PULLEY COVER - GREY	2	P712-032G
026	COVER FRAME - GREY	1	P711-026G	136	PULLEY	2	A971-08
027R	SCREW INSERT	10	000-076-820	137	NUT - H/N (M10)	4	001-101-030
027S	SCREW - M/P (M5*L15)	10	002-210-035	138	WASHER - F (D21*D10.5*T2)	8	003-301-001
027T	BRACKET	5	105-710-182	139	WASHER - SP (M10)	4	003-302-008
043	RUBBER CUSHION	1	A951-84	140	SCREW - H (M10*P1.5*L30)	4	002-206-070
044	SCREW - P (M5*P0.8*L12)	2	002-211-255	147	PEC FLY FRAME - GREY	1	P722-147G
046	PASTIC RIVET	4	000-076-990	149	RUBBER CUSHION	4	A971-44
049	WASHER - F (D27*D6.3*T3.0)	2	003-301-008	150	SCREW - B/H (M8*P1.25*L15)	4	002-205-812
051	SCREW - M/H (M5*L20)	2	002-203-051	151	STOPPER FOOT	4	A921-54
058	BUSHING	2	A911-36	152	NUT - H (M10)	4	001-102-141
059	STACK GUIDE TUBE	2	P711-059	153	END CAP	2	DF-104-058
060	CUSHION RING	2	A911-37	157	WASHER - F (D20*D8*T2.0)	4	003-301-028
061	GUIDE RING	4	A911-38	158	STOPPER	4	DF-100-095
062	UPPER COUNTERWEIGHT	1	S915-029	159	WASHER - (D13*D8.2*T1.0)	4	003-301-119
063	16-POSITION TUBE	1	P712-063	160	SCREW - B/H (M8*P1.25*L20)	4	002-205-820
064	NUT - H/N (M8)	2	001-101-080	162	BUSHING	2	096-413-050
065	AXLE	2	005-730-010	166	BUSHING	2	A923-98
066	WASHER - F (D17*D8.3*T2)	4	003-301-038	167	WASHER - (D32*D25.2*T2.0)	2	003-301-118
067	SCREW - H (M8*P1.25*L65)	2	002-206-068	168	WASHER - (D55*D26*T2.0)	2	103-301-157
068	SCREW - B/H (M5*P0.8*L10)	2	002-205-510	169	SNAP RING - (STW-25)	2	004-401-007
069	CABLE BRACKET	1	A911-055	170	PIN	2	096-413-040
070	SCREW -B/H (M8*P1.25*L18)	2	002-205-813	171	SPRING	2	DF-101-135
071	WASHER - SP (M8*T2.0)	2	003-302-006	172	O-RING	2	000-076-690
072	WASHER - F (D17*D8*T1.5)	2	003-301-024	173	SPACER	2	053-213-082
073	1-PLATE BRACKET	1	196-010-16L	173R	WASHER - W (D11*D6.4)	2	003-303-010
074	PLATE STICKER - 5KG (GREEN)	1	S912-047	174	KNOB LOWER COVER	2	090-930-104
075	PLATE STICKER - 10-60KG (GREEN)	1	S911-048	175	WASHER - F (D12*D4.2 T1.0)	2	003-301-018
076	PLATE STICKER - 65-100KG (GREEN)	1	S911-049	176	SCREW - P (M4*P0.7*L14)	2	002-211-067
077	GUIDE RING	2	P711-077	177	CAP	2	DF-100-080
078	SCREW - B/P (M5*L12)	4	002-207-140	178	SCREW - B/H (M8*P1.25*L20)	4	002-205-820
082	SCREW - B/H (M6*P1.0*L15)	4	002-205-613	179	WASHER - F (D26*D8.3*T3)	4	003-301-027
083	WEIGHT STACK CUSHION	2	P711-083	180	BUSHING	4	092-213-190

BBL	Description	QTY	Part Number	BBL	Description	QTY	Part Number
182	AXLE INSERT	2	S922-165	411	MAIN FRAME - GREY	1	102-291-11K
190	CABLE BLOCK	2	DF-100-067	412	BRACKET	5	P712-412
191	SCREW - M/H (M5*L16)	10	002-203-052	414	RUBBER FOOT	2	P711-414
192	NUT - H/N (M5*P0.8)	14	001-101-060	415	TUBE HARDWARE	2	P711-415
193	SCREW - B/H (M5*L30)	4	S972-053	416	WEIGHT STACK PLATE	1	P712-416
194	SCREW - M/H (M6*P1.0*L20)	4	T645-566	417	CABLE BRACKET	1	S972-406
195	WASHER - SP (M6*T1.5)	4	003-302-002	418	SET FORK	1	P712-418
196	NUT - H/N (M6*P1.0*6 )	4	001-101-071	420A	SELECTOR FORK - W/CORD	1	A911-50
198	BRACKET	2	P733-186	421A	SELECTOR FORK - NO CORD	1	190-591-530
200	FRAME ARM - GREY	1	P722-200G	422	WEIGHT PLATE - 5KG	15	S911-419
201	SCREW - H (M10*P1.5*L30)	2	002-206-070	423	PLATE STICKER - 5-100KG (GREEN)	1	103-191-230
202	WASHER - SP (M10)	2	003-302-008	424	COVER HARDWARE	3	S912-404
203	WASHER - F (D21*D10.5*T2)	4	003-301-001	431	PULLEY ASSEMBLY - GREY	1	P722-431G
204	NUT - H/N (M8)	4	001-101-080	432	BELT TIGHTNESS ASSEMBLY	1	P722-432
205	SCREW - M/H (M8*P1.25*L25)	4	002-203-061	481	FRAME CONNECTOR - GREY	1	P722-481G
206	WASHER - SP (M8)	4	003-302-010	484	CAM	1	P722-484
207	WASHER - F (D22*D8.2*T2)	4	003-301-042	485	CAM	1	P722-485
208	SCREW - B/H (M8*P1.25*L20)	4	002-202-040	486	STOPPER	4	DF-104-063
218	STICKER - POSITION	1	DF-103-208	487	AXLE	2	192-291-111
219	SCREW - B/H (M5*P0.8*L10)	1	002-205-510	488	PEC ARM - GREY	2	196-491-06K
220	SEAT POST COLLAR	1	C570U-97	489	ARM - LEFT - GREY	1	P722-489G
221	SCREW - B/H (M5*P0.8*L10)	2	002-205-510	490	ADJUSTMENT KNOB	2	DF-104-068
225	PASTIC RIVET	2	000-076-990	491	ARM - RIGHT - GREY	1	P722-491G
226R	STICKER - ROUND	1	E850-177	495	SEAT FRAME - GREY	1	102-291-95K
228	SCREW - M/H (M6*P1.0*L8)	1	002-203-022	496	ADJUSTMENT KNOB	1	DF-100-088
229	TUBE SHEATH	1	DF-100-094	497	COLLAR	1	A991-12
230	SCREW - M/H (M4*P0.7*L8)	2	002-209-143	498	RUBBER FOOT	1	P711-414
231	NUT - H/N (M10)	2	001-101-030	499	FRAME ANCHOR	1	103-191-020
232	WASHER - F (D16*D10.2*T1.0)	2	003-301-141	502	SEAT CUSHION FRAME - GREY	2	S912-472
233	WASHER - SP (M10)	2	003-302-008	503	SEAT CUSHION - BLACK	2	P712-485B
234	SCREW - H (M10*P1.5*L30)	2	002-206-070	504	SEAT POST	1	P721-502
235	STOPPER PLATE	1	153-210-330	506	SEAT SLEAVE	1	P712-488
236	SCREW - B/P (M4*12)	2	002-207-130	507	FOAM PLUG	1	102-291-210
237	PIN	1	053-251-024				
238	SPRING	1	DF-101-135				
239	O-RING	1	000-076-690				
240	SPACER	1	053-213-082				
240R	WASHER - W (D11*D6.4)	1	003-303-010				
241	ADJUSTMENT KNOB	1	092-130-071				
242	WASHER - F (D12*D4.2 T1.0)	1	003-301-018				
243	SCREW - P (M4*P0.7*L14)	1	002-211-067				
244	ADJUSTMENT KNOB CAP	1	092-130-060				
401	MAIN FRAME ASSEMBLY - GREY	1	102-291-10K				
402	TOP COVER ASSEMBLY	1	103-191-200				
403	TOP COVER - RIGHT	1	P711-403				
404	TOP COVER - LEFT	1	P711-404				
405	AXLE	1	DF-103-426				
406	BOTTLE HOLDER	1	P711-406				
407	COVER ASSEMBLY	1	102-291-070				
409	FRONT COVER	1	P722-409				
410	BRACKET	5	P711-410				



CHANGE DATE	CHANGE DESCRIPTION	CHANGE NO.	NAME	SPORTSART FITNESS	DRAWN BY	UNITS	MM	SALES BLOW UP DIAGRAM	DIAGRAM NO.	GCI-F101B-B
2016.01.29	B0 406 水壺架組修改造型, 取消(48)(50)(52),(49)(51)變更料件	05-20150906M	蔡鴻興	RESTRICTED USAGE , PLEASE DON'T FORWARD TO ANYONE WHO ISN'T AUTHORIZED	VERIFIED BY	QTY	1			P722
						VERSION	B0		MODEL	
						RATIO	1/11			



CHANGE DATE	CHANGE DESCRIPTION	CHANGE NO.	NAME	 RESTRICTED USAGE , PLEASE DON'T FORWARD TO ANYONE WHO ISN'T AUTHORIZED	DRAWN BY	UNITS	MM	SALES BLOW UP DIAGRAM	DIAGRAM NO.	GCI-F101C-C	
2018.01.18	△C1 修正 (166)(167)(168)(169) 安裝順序		林士文			QTY	1				P722/DF-204
2019.01.04	△C2 新增 (157R) 號件		黃永業			VERSION	C3	XX		MODEL	△B1
2019.01.15	△C3 取消 (224) 變更 (223)(222) (507)	05-20190116M	林士文		VERIFIED BY	RATIO	1:13				