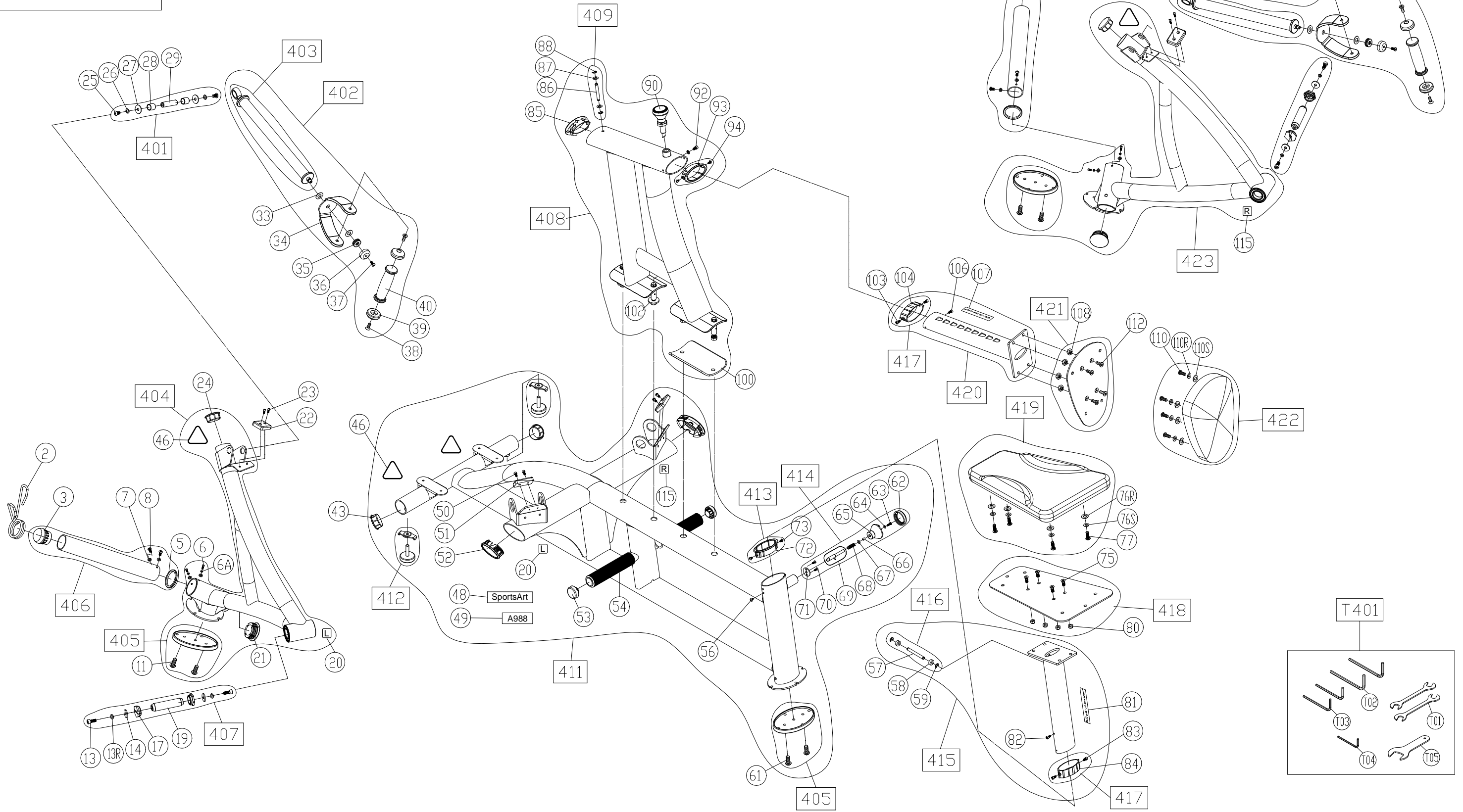
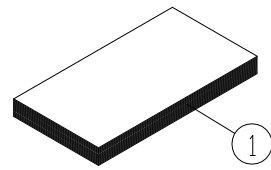


BBL	Description	QTY	Part Number	BBL	Description	QTY	Part Number
001	OWNER'S MANUAL	1	098-861-011	066A	WASHER - W (D11*D6.4)	1	003-303-010
002	SPRING CLIP	2	A983-27	067	O-RING	1	000-076-690
003	END CAP	2	A983-28	068	SPRING	1	DF-101-135
005	WEIGHT STACK CUSHION	2	A981-17	069	PIN	1	053-251-024
006	SCREW - B/H (M6*P1.0*L10)	4	002-205-610	070	SCREW - B/P (M4*12)	2	002-207-130
006A	WASHER - SP (M6)	4	003-302-011	071	STOPPER PLATE	1	153-210-330
007	WASHER - SU (D20*D7*T2.0)	8	E822-034B	072	TUBE SHEATH	1	DF-100-094
008	SCREW - M/H (M6*P1.0*L15)	4	002-203-023	073	SCREW - M/H (M4*P0.7*L8)	2	002-209-143
011	PASTIC RIVET	4	000-076-990	075	SCREW - B/H (M8*P1.25*L20)	4	002-202-040
013	SCREW - B/H (M8*P1.25*L20)	4	002-205-820	076R	WASHER - F (D22*D8.2*T2)	4	003-301-042
013R	WASHER - SP (M8)	4	003-302-010	076S	WASHER - SP (M8)	4	003-302-010
014	WASHER - F (D26*D8.3*T3)	4	003-301-027	077	SCREW - M/H (M8*P1.25*L25)	4	002-203-061
017	BUSHING	4	098-613-490	080	NUT - H/N (M8)	4	001-101-080
019	AXLE	2	098-613-480	081	STICKER - POSITION	1	DF-103-208
020	STICKER - LEFT	2	000-063-044	082	SCREW - B/H (M5*P0.8*L10)	1	002-205-510
021	END CAP	2	A983-41	083	SCREW - B/H (M5*P0.8*L10)	2	002-205-510
022	RUBBER CUSHION	2	A951-84	084	SEAT POST COLLAR	1	C570U-97
023	SCREW - P (M5*P0.8*L10)	4	002-211-253	085	END CAP	1	A991-09
024	END CAP - OLD STYLE	2	8300-26	086	PIN	1	A981-20
025	SCREW - M/H (M8*P1.25*L15)	4	C572R-132	087	WASHER - F (D17*D8.3*T1)	2	003-301-044
026	WASHER - SP (M8)	4	003-302-010	088	SNAP RING - (6MM)	2	004-402-012
027	WASHER - F (D26*D8.5*T2)	4	003-301-033	090	ADJUSTMENT KNOB	1	DF-105-102
028	BUSHING	4	098-813-231	092	SCREW - M/H (M6*P1.0*L8)	1	002-203-022
029	AXLE	2	098-813-190	093	TUBE SHEATH	1	DF-100-094
033	WASHER - (D25*D15.5*T1)	4	003-307-012	094	SCREW - M/H (M4*P0.7*L8)	2	002-209-143
034	HANDLE FRAME	2	192-153-020	101	NUT - H/N (M10)	4	001-101-030
035	BEARING	2	000-004-530	102	WASHER - (D35*D12*T4.0)	2	103-301-160
036	CAP	2	092-113-041	103	SCREW - B/H (M5*P0.8*L10)	2	002-205-510
037	SCREW - B/H (M6*P1.0*L15)	2	002-205-614	104	SEAT POST COLLAR	1	C570U-97
038	BOLT - H (10MM M8*L20)	4	002-206-073	106	SCREW - B/H (M5*P0.8*L10)	1	002-205-510
039	RUBBER BUMPER	4	A951-100	107	STICKER - SEAT ADJUSTMENT	1	P715-194
040	HANDLE GRIP	2	S916-163	108	NUT - H/N (M8)	4	001-101-080
043	END CAP - OLD STYLE	2	8300-26	110	SCREW - M/H (M8*P1.25*L25)	4	002-203-061
046	STICKER - WARNING	4	082-063-030	110R	WASHER - SP (M8)	4	003-302-010
048	STICKER - SPORTSART	1	000-063-960	110S	WASHER - F (D22*D8.2*T2)	4	003-301-042
049	STICKER - MODEL NUMBER	1	098-863-030	112	SCREW - B/H (M8*P1.25*L20)	4	002-202-040
050	SCREW - P (M5*P0.8*L10)	4	002-211-253	115	STICKER - RIGHT	2	000-063-045
051	RUBBER CUSHION	2	A951-84	401	AXLE HARDWARE	2	198-891-010
052	END CAP	2	A991-09	402	ARM - LEFT - GREY	2	198-891-02K
053	END CAP	2	DF-102-073	402	ARM - LEFT - SILVER	2	198-891-02C
054	RUBBER GRIP	2	P732-220	403	BAR - GREY	2	198-891-03K
056	SCREW - M/H (M6*P1.0*L8)	1	002-203-022	403	BAR - SILVER	2	198-891-03C
057	AXLE PIN	1	090-513-430	404	HANDLE FRAME - LEFT - SILVER	1	198-891-04C
058	SPACER	2	UB521M-132	404	HANDLE FRAME - LEFT - GREY	1	198-891-04K
059	SNAP RING - (6MM)	2	004-402-012	405	RUBBER FOOT	3	P711-414
061	PASTIC RIVET	2	000-076-990	406	PLATE LOAD ARMS	2	198-891-060
062	ADJUSTMENT KNOB CAP	1	092-130-060	407	AXLE	2	198-891-070
063	SCREW - P (M4*P0.7*L14)	1	002-211-067	408	CENTER FRAME - SILVER	1	198-891-08C
064	WASHER - F (D12*D4.2 T1.0)	1	003-301-018	408	CENTER FRAME - GREY	1	198-891-08K
065	ADJUSTMENT KNOB	1	092-130-071	409	AXLE	1	P712-492
066	SPACER	1	053-213-082	411	MAIN FRAME - SILVER	1	198-891-11C

BBL	Description	QTY	Part Number	BBL	Description	QTY	Part Number
411	MAIN FRAME - GREY	1	198-891-11K				
412	LEVELER FOOT	2	S770-427				
413	COLLAR	2	A991-12				
414	ADJUSTMENT KNOB	1	DF-100-088				
415	SEAT POST	1	P721-502				
416	AXLE	1	P715-489				
417	SEAT SLEAVE	2	P712-488				
418	SEAT FRAME - GREY	1	198-891-18K				
418	SEAT FRAME - SILVER	1	198-891-18C				
419	SEAT CUSHION - BLACK	1	A916-54B				
419	SEAT CUSHION - ORANGE	1	A916-54				
420	SEAT POST	1	198-891-200				
421	CHEST PAD FRAME - SILVER	1	P721-498S				
421	CHEST PAD FRAME - GREY	1	P721-498G				
422	CHEST CUSHION - ORANGE	1	A955-05				
422	CHEST CUSHION - BLACK	1	A955-05B				
423	HANDLE FRAME - RIGHT - GREY	1	198-891-23K				
423	HANDLE FRAME - RIGHT - SILVER	1	198-891-23C				
T401	HARDWARE KIT	1	198-891-900				



CHANGE DATE	CHANGE DESCRIPTION	CHANGE NO.	NAME	<p>RESTRICTED USAGE , PLEASE DON'T FORWARD TO ANYONE WHO ISN'T AUTHORIZED</p>	DRAWN BY	UNITS	MM	SALES BLOW UP DIAGRAM	DIAGRAM NO.	GGW-F101A-A	
					VERIFIED BY	QTY	1			A988	
						VERSION	A0			MODEL	
						RATIO	1/12				