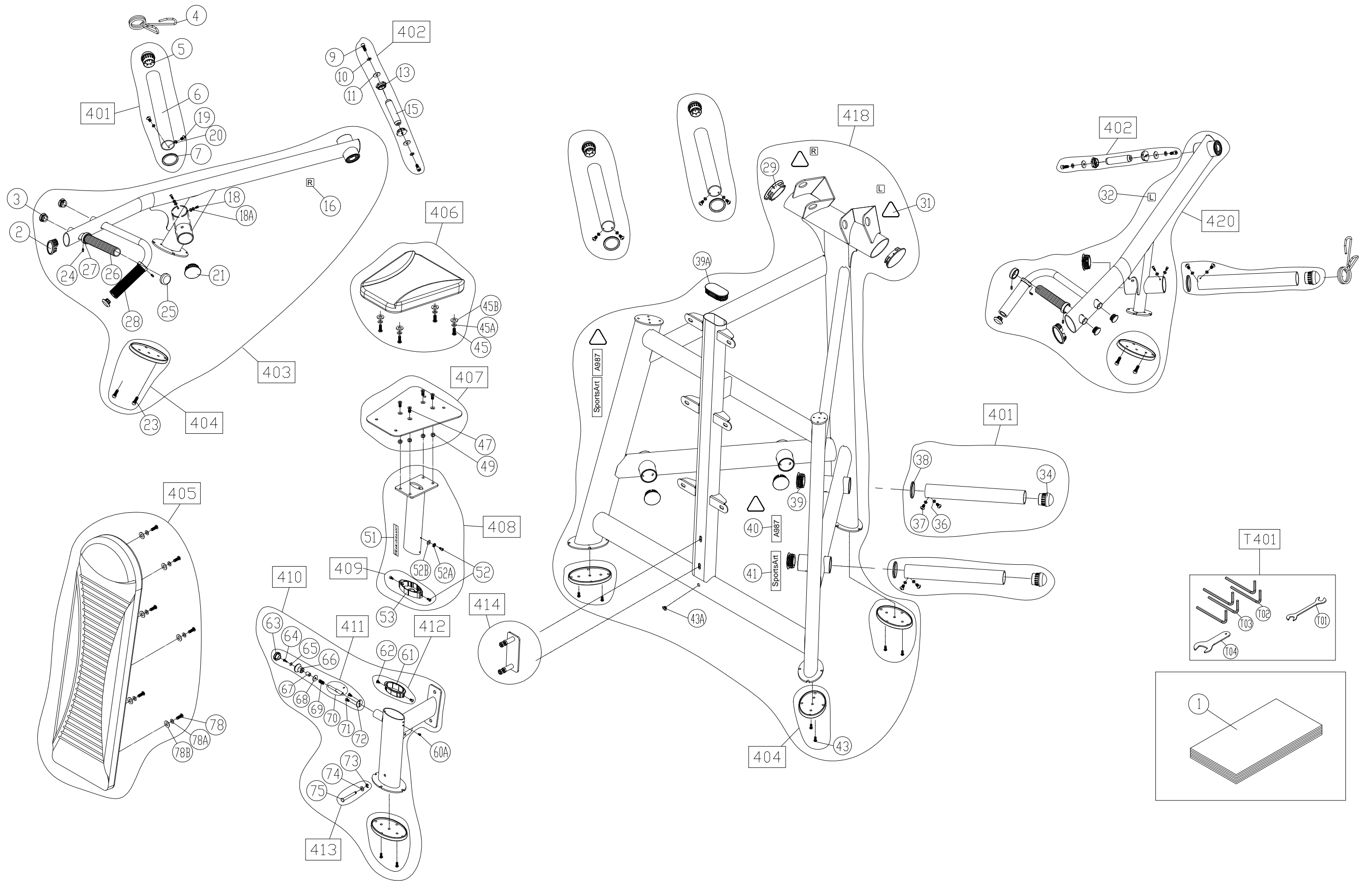


BBL	Description	QTY	Part Number	BBL	Description	QTY	Part Number
001	OWNER'S MANUAL	1	098-761-020	064	SCREW - P (M4*P0.7*L14)	1	002-211-067
002	END CAP	2	A921-58	065	WASHER - F (D12*D4.2 T1.0)	1	003-301-018
003	CAP	4	C575U-436	066	ADJUSTMENT KNOB	1	092-130-071
004	SPRING CLIP	2	A983-27	067	SPACER	1	053-213-082
005	END CAP	2	A983-28	067A	WASHER - W (D11*D6.4)	1	003-303-010
006	PLATE LOAD BAR	2	A983-42	068	O-RING	1	000-076-690
007	WEIGHT STACK CUSHION	2	A981-17	069	SPRING	1	DF-101-135
009	SCREW - B/H (M8*P1.25*L20)	4	002-205-820	070	PIN	1	098-651-010
010	WASHER - SP (M8)	4	003-302-010	071	SCREW - B/P (M4*12)	2	002-207-130
011	WASHER - F (D26*D8.3*T3)	4	003-301-027	072	STOPPER PLATE	1	153-210-330
013	BUSHING	4	098-613-490	073	SNAP RING - (6MM)	2	004-402-012
015	AXLE	2	098-613-480	074	WASHER - F (D17*D8.3*T1)	2	003-301-044
016	STICKER - RIGHT	2	000-063-045	075	PIN	1	090-513-303
018	SCREW - B/H (M6*P1.0*L10)	4	002-205-610	078	SCREW - M/H (M8*P1.25*L25)	6	002-203-061
018A	WASHER - SP (M6)	4	003-302-011	078A	WASHER - SP (M8)	6	003-302-010
019	SCREW - M/H (M6*P1.0*L15)	4	002-203-023	078B	WASHER - F (D22*D8.2*T2)	6	003-301-042
020	WASHER - SU (D20*D7*T2.0)	8	E822-034B	401	PLATE LOAD ARMS	6	198-891-060
021	END CAP	2	A983-41	402	AXLE	2	198-891-070
023	PASTIC RIVET	4	000-076-990	403	PRESS ARM - RIGHT - SILVER	1	198-791-03C
024	SCREW - H (M5*L5)	4	002-204-064	403	PRESS ARM - RIGHT - GREY	1	198-791-03K
025	END CAP	4	DF-103-178	404	RUBBER FOOT	6	P711-414
026	RUBBER GRIP	2	S956-284	405	BACK CUSHION - ORANGE	1	A915-66
027	HANDLEBAR RING	4	A931-40	405	BACK CUSHION - GREY	1	A915-66B
028	RUBBER GRIP	2	P732-220	406	SEAT PAD - ORANGE	1	A912-38
029	END CAP	2	A991-09	406	SEAT PAD - GREY	1	A912-38B
031	STICKER - WARNING	4	082-063-030	407	SEAT CUSHION FRAME - SILVER	1	198-791-07C
032	STICKER - LEFT	2	000-063-044	407	SEAT CUSHION FRAME - GREY	1	198-791-07K
034	END CAP	4	A983-28	408	SEAT BOTTOM POST	1	198-791-080
036	WASHER - SU (D20*D7*T2.0)	8	E822-034B	409	SEAT POST SHEATH	1	S912-474
037	SCREW - M/H (M6*P1.0*L15)	8	002-203-023	410	SEAT FRAME - GREY	1	198-791-10K
038	WEIGHT STACK CUSHION	4	A981-17	410	SEAT FRAME - SILVER	1	198-791-10C
039	END CAP	4	A983-41	411	ADJUSMTNET KNOB	1	198-691-200
039A	END CAP	1	DF-102-027	412	SEAT POST SHEATH	1	S912-478
040	STICKER - MODEL NUMBER	2	098-763-030	413	PIN	1	S912-476
041	STICKER - SPORTSART	2	000-063-960	414	CONNECTOR PLATE - GREY	1	P712-482G
043	PASTIC RIVET	8	000-076-990	414	CONNECTOR PLATE - SILVER	1	P712-482S
043A	PLUG	1	T655-440	418	MAIN FRAME - SILVER	1	198-791-18C
045	SCREW - M/H (M8*P1.25*L25)	4	002-203-061	418	MAIN FRAME - GREY	1	198-791-18K
045A	WASHER - SP (M8)	4	003-302-010	420	PRESS ARM - LEFT - GREY	1	198-791-20K
045B	WASHER - F (D22*D8.2*T2)	4	003-301-042	420	PRESS ARM - LEFT - SILVER	1	198-791-20C
047	SCREW - B/H (M8*P1.25*L20)	4	002-202-040				
049	NUT - H/N (M8)	4	001-101-080				
051	STICKER - POSITION	1	DF-103-208				
052	SCREW - B/H (M5*P0.8*L10)	3	002-205-510				
052A	WASHER - SP (M5*P0.8*L12)	1	003-302-004				
052B	WASHER - F (D12*D5.5*T2.5)	1	103-301-002				
053	SEAT POST SHEATH	1	A912-44				
060A	SCREW - M/H (M6*P1.0*L15)	1	002-203-023				
061	END CAP	1	A912-46				
062	SCREW - M/P (M5*0.8*L12)	2	S972-174				
063	ADJUSTMENT KNOB CAP	1	092-130-060				



CHANGE DATE	CHANGE DESCRIPTION	CHANGE NO.	NAME
XXXXXXXX			


 RESTRICTED USAGE ,
 PLEASE DON'T FORWARD TO ANYONE WHO ISN'T AUTHORIZED

DRAWN BY	UNITS	MM	SALES BLOW UP DIAGRAM	DIAGRAM NO.	GGV-F101A-A
	QTY	1			A987
VERIFIED BY	VERSION	A0		MODEL	
	RATIO	1/13			