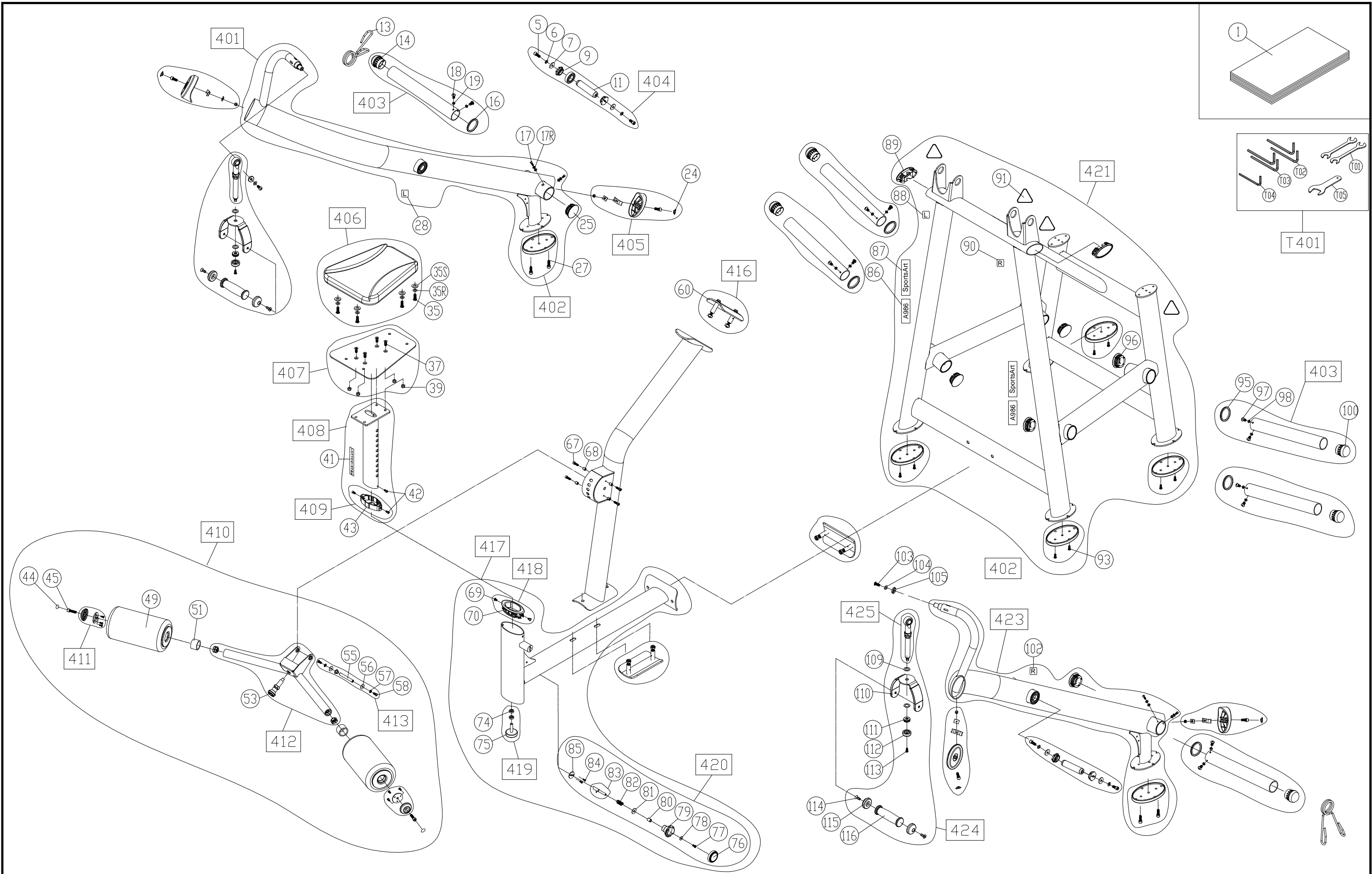


BBL	Description	QTY	Part Number	BBL	Description	QTY	Part Number
001	OWNER'S MANUAL	1	098-661-020	086	STICKER - MODEL NUMBER	2	098-663-030
005	SCREW - B/H (M8*P1.25*L20)	4	002-205-820	087	STICKER - SPORTSART	2	000-063-960
006	WASHER - SP (M8)	4	003-302-010	088	STICKER - LEFT	1	000-063-044
007	WASHER - F (D26*D8.3*T3)	4	003-301-027	089	END CAP	2	A991-09
009	BUSHING	4	098-613-490	090	STICKER - RIGHT	1	000-063-045
011	AXLE	2	098-613-480	091	STICKER - WARNING	4	082-063-030
013	SPRING CLIP	2	A983-27	093	PASTIC RIVET	8	000-076-990
014	END CAP	2	A983-28	095	WEIGHT STACK CUSHION	4	A981-17
016	WEIGHT STACK CUSHION	2	A981-17	096	END CAP	4	A983-41
017	SCREW - B/H (M6*P1.0*L10)	4	002-205-610	097	SCREW - M/H (M6*P1.0*L15)	8	002-203-023
017R	WASHER - SP (M6)	4	003-302-011	098	WASHER - SU (D20*D7*T2.0)	8	E822-034B
018	SCREW - M/H (M6*P1.0*L15)	4	002-203-023	100	END CAP	4	A983-28
019	WASHER - SU (D20*D7*T2.0)	8	E822-034B	102	STICKER - RIGHT	1	000-063-045
024	SCREW CAP	2	053-030-420	103	BOLT - H (10MM M8*L20)	2	002-206-073
025	END CAP	2	A983-41	104	WASHER - SP (M8)	2	003-302-010
027	PASTIC RIVET	4	000-076-990	105	BUSHING	2	098-613-470
028	STICKER - LEFT	1	000-063-044	109	WASHER - (D25*D15.5*T1)	4	003-307-012
035	SCREW - M/H (M8*P1.25*L25)	4	002-203-061	110	HANDLE FRAME	2	192-153-020
035R	WASHER - SP (M8)	4	003-302-010	111	BEARING	2	000-004-530
035S	WASHER - F (D22*D8.2*T2)	4	003-301-042	112	CAP	2	092-113-041
037	SCREW - B/H (M8*P1.25*L20)	4	002-202-040	113	SCREW - B/H (M6*P1.0*L15)	2	002-205-614
039	NUT - H/N (M8)	4	001-101-080	114	SCREW - B/H (M8*P1.25*L30)	4	002-205-831
041	STICKER - POSITION	1	DF-103-208	115	RUBBER BUMPER	4	A951-100
042	SCREW - B/H (M5*P0.8*L10)	3	002-205-510	116	HANDLE GRIP	2	S916-163
043	SEAT POST SHEATH	1	A912-44	401	ARM FRAME - LEFT - SILVER	1	198-691-01C
044	STICKER - ROUND	2	E850-177	401	ARM FRAME - LEFT - GREY	1	198-691-01K
045	SCREW - B/H (M8*P1.25*L30)	2	002-205-831	402	RUBBER FOOT	6	P711-414
051	SPACER	2	A93-59	403	PLATE LOAD ARMS	6	198-891-060
053	ADJUSTMENT KNOB	1	A911-28	404	AXLE	2	198-891-070
055	AXLE	1	A93-56	405	END CAP	1	TR21-72
056	WASHER - F (D20*D6.3*T1.5)	2	003-301-043	406	SEAT CUSHION - BLACK	1	A916-54B
057	WASHER - SP (M6)	2	003-302-011	406	SEAT CUSHION - ORANGE	1	A916-54
058	SCREW - M/H (M6*P1.0*L12)	2	002-203-027	407	SEAT FRAME - SILVER	1	198-891-18C
060	CONNECTOR PLATE - SILVER	3	198-610-04C	407	SEAT FRAME - GREY	1	198-891-18K
060	CONNECTOR PLATE - GREY	3	198-610-04K	408	SEAT POST	1	A915-71
067	SCREW - B/H (M6*P1.0*L20)	4	002-205-621	409	SEAT POST SHEATH	1	S912-474
068	BUSHING	4	A93-55	410	KNEE FRAME ASSEMBLY - SILVER	1	198-691-10C
069	SCREW - M/P (M5*0.8*L12)	2	S972-174	410	KNEE FRAME ASSEMBLY - GREY	1	198-691-10K
070	END CAP	1	A912-46	411	END CAP - GREY	2	190510168
074	NUT - H (M10*P1.5*H6)	2	001-102-140	411	END CAP - SILVER	2	A917-50
075	LEVELER	1	DF-101-159	412	CUSHION FRAME - GREY (OLD)	1	P726-482G
076	ADJUSTMENT KNOB CAP	1	092-130-060	412	CUSHION FRAME - SILVER (OLD)	1	P726-482S
077	SCREW - P (M4*P0.7*L14)	1	002-211-067	413	AXLE	1	198-691-130
078	WASHER - F (D12*D4.2 T1.0)	1	003-301-018	416	CONNECTOR PLATE - GREY	3	198-691-16K
079	ADJUSTMENT KNOB	1	092-130-071	416	CONNECTOR PLATE - SILVER	3	198-691-16C
080	SPACER	1	053-213-082	417	SUPPORT FRAME - GREY	1	198-691-17K
081	O-RING	1	000-076-690	417	SUPPORT FRAME - SILVER	1	198-691-17C
082	SPRING	1	DF-101-135	418	SEAT POST SHEATH	1	S912-478
083	PIN	1	098-651-010	419	LEVELLER FOOT	1	198-691-190
084	SCREW - B/P (M4*12)	2	002-207-130	420	ADJUSMTNET KNOB	1	198-691-200
085	STOPPER PLATE	1	153-210-330	421	MAIN FRAME - GREY	1	198-691-21K

BBL	Description	QTY	Part Number	BBL	Description	QTY	Part Number
421	MAIN FRAME - SILVER	1	198-691-21C				
423	ARM FRAME - RIGHT - SILVER	1	198-691-23C				
423	ARM FRAME - RIGHT - GREY	1	198-691-23K				
424	HANDLE ASSEMBLY	2	198-691-240				
425	HANDLE AXLE	2	198-691-250				
T401	HARDWARE KIT	1	198-891-900				



CHANGE DATE	CHANGE DESCRIPTION	CHANGE NO.	NAME
XXXXXXXX			


 RESTRICTED USAGE ,
 PLEASE DON'T FORWARD TO ANYONE WHO ISN'T AUTHORIZED

DRAWN BY	UNITS	MM	SALES BLOW UP DIAGRAM	DIAGRAM NO.	GGU-F101--A
	QTY	1			A986
VERIFIED BY	VERSION	A0		MODEL	
	RATIO	1/14			