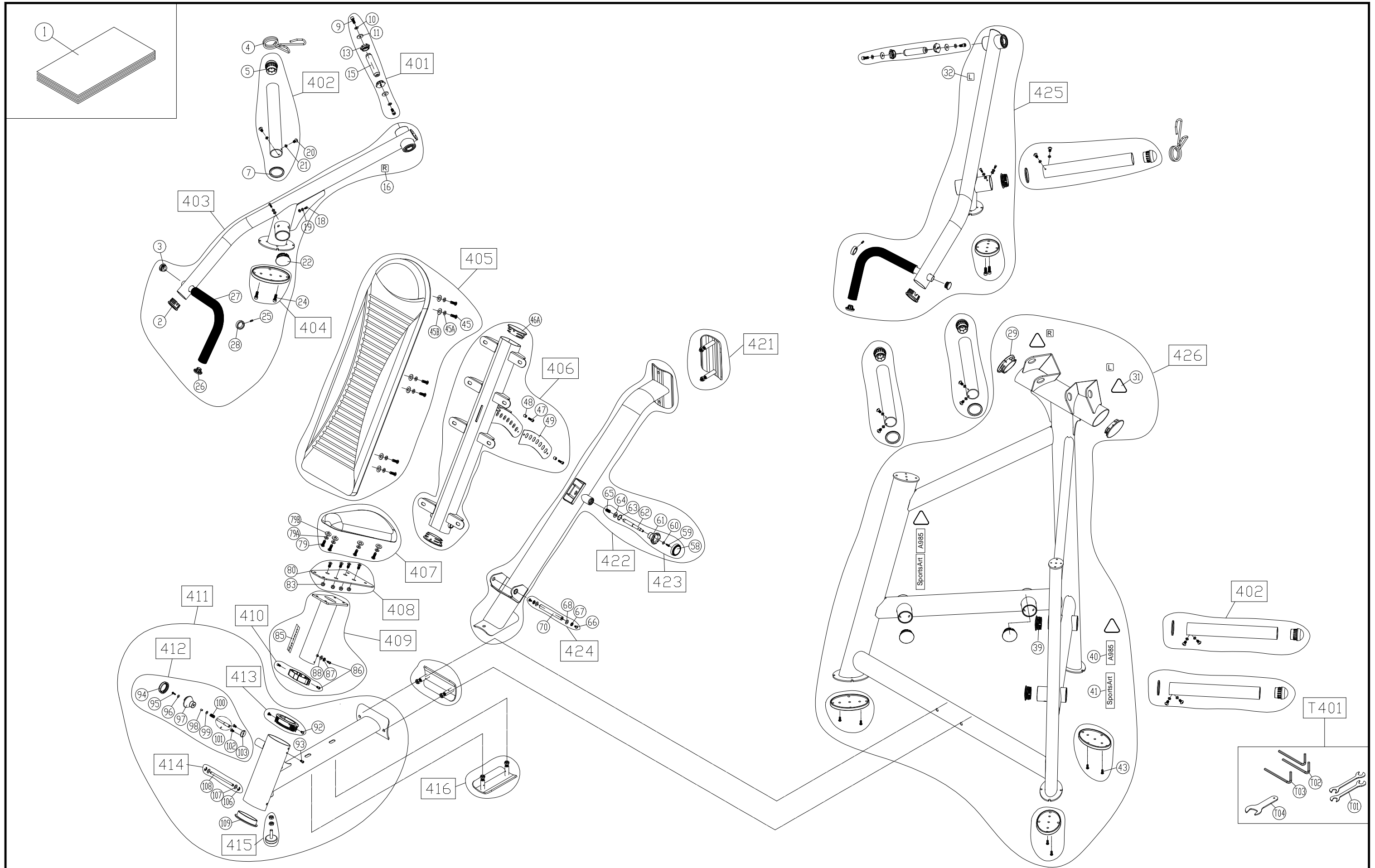


BBL	Description	QTY	Part Number	BBL	Description	QTY	Part Number
001	OWNER'S MANUAL	1	098-561-010	068	WASHER - F (D20*D6.3*T1.5)	2	003-301-043
002	END CAP	2	A921-58	070	AXLE	1	098-513-180
003	CAP	2	C575U-436	079	SCREW - M/H (M8*P1.25*L25)	4	002-203-061
004	SPRING CLIP	2	A983-27	079A	WASHER - SP (M8)	4	003-302-010
005	END CAP	2	A983-28	079B	WASHER - F (D22*D8.2*T2)	4	003-301-042
007	WEIGHT STACK CUSHION	2	A981-17	080	SEAT BOTTOM FRAME - GREY	1	199-810-04K
009	SCREW - B/H (M8*P1.25*L20)	4	002-205-820	080	SEAT BOTTOM FRAME - SILVER	1	A998-09
010	WASHER - SP (M8)	4	003-302-010	081	SCREW - B/H (M8*P1.25*L20)	4	002-202-040
011	WASHER - F (D26*D8.3*T3)	4	003-301-027	084	SEAT BOTTOM POST	1	090-550-124
013	BUSHING	4	098-613-490	085	STICKER - POSITION	1	DF-103-208
015	AXLE	2	098-613-480	086	SCREW - B/H (M5*P0.8*L10)	3	002-205-510
016	STICKER - RIGHT	2	000-063-045	087	WASHER - SP (M5*P0.8*L12)	1	003-302-004
018	SCREW - B/H (M6*P1.0*L10)	4	002-205-610	088	WASHER - F (D12*D5.5*T2.5)	1	103-301-002
019	WASHER - SP (M6)	4	003-302-011	092	SCREW - M/P (M5*0.8*L12)	2	S972-174
020	SCREW - M/H (M6*P1.0*L15)	4	002-203-023	093	SCREW - M/H (M6*P1.0*L15)	1	002-203-023
021	WASHER - SU (D20*D7*T2.0)	8	E822-034B	094	ADJUSTMENT KNOB CAP	1	092-130-060
022	END CAP	2	A983-41	095	SCREW - P (M4*P0.7*L14)	1	002-211-067
024	PASTIC RIVET	4	000-076-990	096	WASHER - F (D12*D4.2 T1.0)	1	003-301-018
025	SCREW - H (M5*L5)	2	002-204-064	097	ADJUSTMENT KNOB	1	092-130-071
026	END CAP	2	DF-103-178	098	SPACER	1	053-213-082
027	RUBBER GRIP	2	000-033-420	098A	WASHER - W (D11*D6.4)	1	003-303-010
028	HANDLEBAR RING	2	A931-40	099	O-RING	1	000-076-690
029	END CAP	2	A991-09	100	SPRING	1	DF-101-135
031	STICKER - WARNING	4	082-063-030	101	PIN	1	098-651-010
032	STICKER - LEFT	2	000-063-044	102	SCREW - B/P (M4*12)	2	002-207-130
034	END CAP	4	A983-28	103	STOPPER PLATE	1	153-210-330
036	WASHER - SU (D20*D7*T2.0)	8	E822-034B	106	SNAP RING - (6MM)	2	004-402-012
037	SCREW - M/H (M6*P1.0*L15)	8	002-203-023	107	WASHER - F (D17*D8.3*T2)	2	003-301-038
038	WEIGHT STACK CUSHION	4	A981-17	108	PIN	1	099-713-040
039	END CAP	4	A983-41	109	OVAL FRAME CAP	1	E835-243
040	STICKER - MODEL NUMBER	2	098-563-030	401	AXLE	2	198-891-070
041	STICKER - SPORTSART	2	000-063-960	402	PLATE LOAD ARMS	6	198-891-060
043	PASTIC RIVET	6	000-076-990	403	ARM PRESS - RIGHT - GREY	1	198-591-03K
045	SCREW - M/H (M8*P1.25*L25)	6	002-203-061	403	ARM PRESS - RIGHT - SILVER	1	198-591-03C
045A	WASHER - SP (M8)	6	003-302-010	404	RUBBER FOOT	5	P711-414
045B	WASHER - F (D22*D8.2*T2)	6	003-301-042	405	BACK CUSHION - ORANGE	1	A915-66
046A	END CAP	2	DF-102-027	405	BACK CUSHION - GREY	1	A915-66B
047	SCREW - B/H (M6*P1.0*L15)	2	002-205-614	406	SEAT BACK FRAME - SILVER	1	198-591-06C
047R	WASHER - F (D13*d6*t1.0)	2	003-301-034	406	SEAT BACK FRAME - GREY	1	198-591-06K
047S	NUT - H/N (M5*P0.8)	2	001-101-070	407	SEAT CUSHION - ORANGE	1	A998-10
049	ADJUSTMENT PLATE	1	098-510-360	407	SEAT CUSHION - BLACK	1	DF-108-038B
058	ADJUSTMENT KNOB CAP	1	092-130-060	408	SEAT BOTTOM FRAME - SILVER	1	198-591-08C
059	SCREW - P (M4*P0.7*L15)	1	T655-467	408	SEAT BOTTOM FRAME - GREY	1	198-591-08K
060	WASHER - F (D12*D4.2 T1.0)	1	003-301-018	409	SEAT BOTTOM POST	1	198-791-080
061	ADJUSTMENT KNOB	1	092-130-071	410	SEAT POST SHEATH	1	S912-474
062	PIN	1	096-313-050	411	SUPPORT FRAME - SILVER	1	198-591-11C
063	SNAP RING - (RTW-22)	1	004-401-029	411	SUPPORT FRAME - GREY	1	198-591-11K
064	WASHER - F (D21*D10.5*T2)	1	003-301-001	412	ADJUSMTNET KNOB	1	198-691-200
065	SPRING	1	011-804-010	413	SEAT POST SHEATH	1	S912-478
066	SCREW - M/H (M6*P1.0*L15)	2	002-203-023	414	AXLE	1	A997-13
067	WASHER - SP (M6)	2	003-302-011	415	LEVELLER FOOT	1	198-691-190

BBL	Description	QTY	Part Number	BBL	Description	QTY	Part Number
416	CONNECTOR PLATE - SILVER	2	198-691-16C				
416	CONNECTOR PLATE - GREY	2	198-691-16K				
421	CONNECTOR PLATE - SILVER	1	198-591-21C				
421	CONNECTOR PLATE - GREY	1	198-591-21K				
422	SEAT FRAME - SILVER	1	198-591-22C				
422	SEAT FRAME - GREY	1	198-591-22K				
423	ADJUSTMENT KNOB	1	198-591-230				
424	AXLE	1	198-591-240				
425	ARM PRESS - LEFT - GREY	1	198-591-25K				
425	ARM PRESS - LEFT - SILVER	1	198-591-25C				
426	MAIN FRAME - GREY	1	198-591-26K				
426	MAIN FRAME - SILVER	1	198-591-26C				



CHANGE DATE	CHANGE DESCRIPTION	CHANGE NO.	NAME	 RESTRICTED USAGE , PLEASE DON'T FORWARD TO ANYONE WHO ISN'T AUTHORIZED	DRAWN BY	UNITS	MM	SALES BLOW UP DIAGRAM	DIAGRAM NO.	GGT-F101A-A	
XXXXXXXX					VERIFIED BY	QTY	1			A985	
						VERSION	A0			MODEL	
						RATIO	1/14				