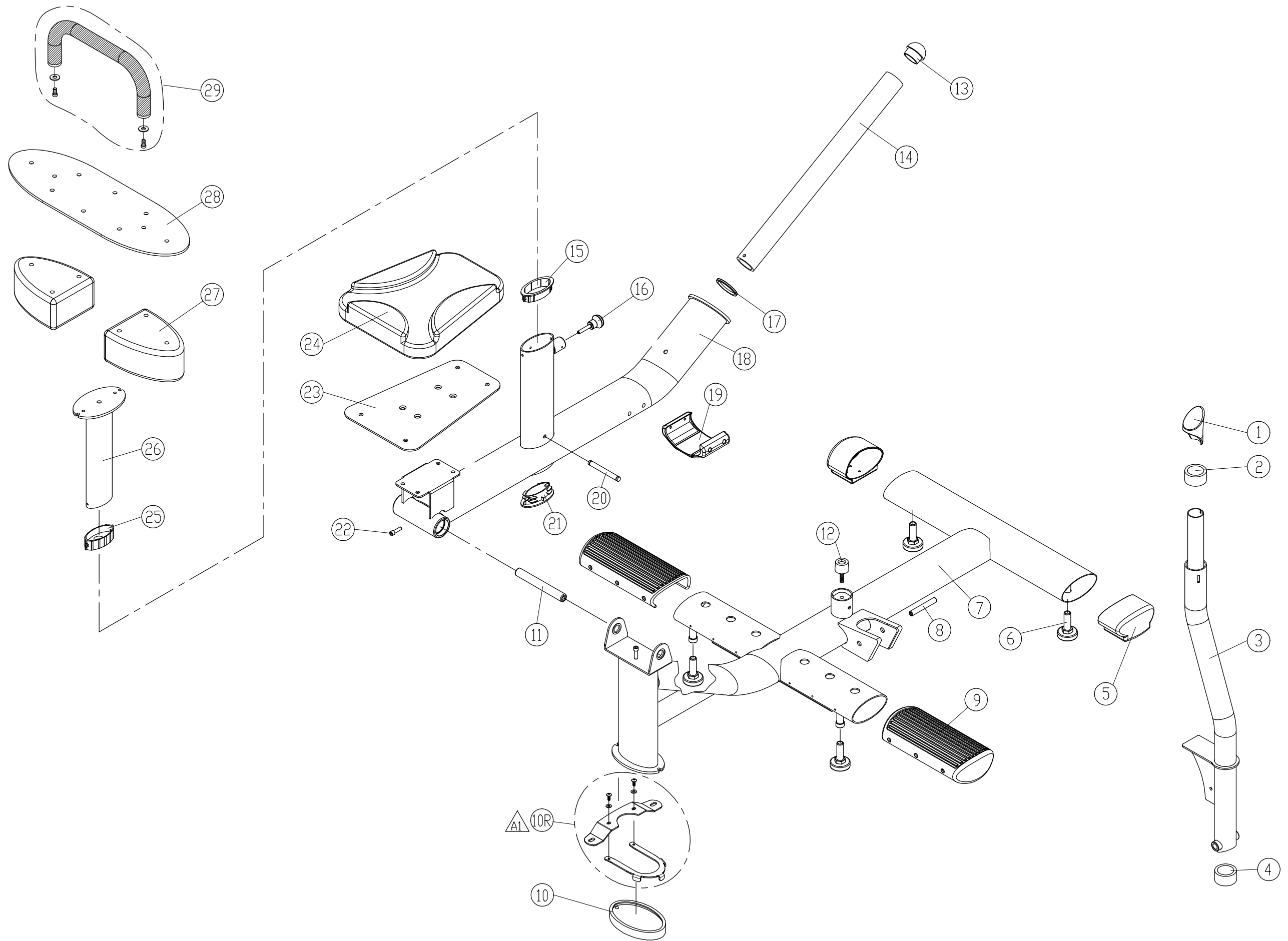


BBL	Description	QTY	Part Number	BBL	Description	QTY	Part Number
001	STATIONARY GRIP - COVER	1	C521R-047				
002	RUBBER COVER	1	A915-50				
003	LIFT BAR - SILVER	1	A981-03				
003	LIFT BAR - GREY	1	198-150-07K				
004	HANDLE POST RING	1	A981-04				
005	END CAP	2	A991-23				
006	LEVELLER	4	DF-102-028				
007	MAIN FRAME - SILVER	1	198-150-11C				
007	MAIN FRAME - GREY	1	198-150-11K				
008	AXLE	1	A981-08				
009	FOOT REST	2	A981-09				
010	RUBBER FOOT	1	A911-10				
010R	GROUND ANCHOR	1	198-391-280				
011	AXLE	1	A981-11				
012	STOPPER	1	A917-59				
013	END CAP	1	A981-13				
014	PLATE LOAD TUBE	1	A981-14				
015	COLLAR	1	A991-12				
016	ADJUSTMENT KNOB	1	A921-55				
017	WEIGHT STACK CUSHION	1	A981-17				
018	UPPER FRAME - SILVER	1	A981-18				
018	UPPER FRAME - GREY	1	198-191-02K				
019	ABSORPTION COVER	1	A981-19				
020	PIN	1	A981-20				
021	END CAP	1	A991-09				
022	SCREW - B/H (M10*L15)	1	A981-22				
023	SEAT CUSHION FRAME - SILVER	1	192-610-05C				
023	SEAT CUSHION FRAME - GREY	1	192-610-05K				
024	SEAT CUSHION - ORANGE	1	A916-54				
025	SEAT POST COLLAR	1	C570U-97				
026	SEAT POST	1	A981-26				
027	KNEE PAD - ORANGE	2	198-191-010				
028	KNEE CUSHION FRAME - SILVER	1	A916-31				
028	KNEE CUSHION FRAME - GREY	1	192-610-01K				
029	HANDLE POST RING	1	A926-43				



CHANGE DATE	CHANGE DESCRIPTION	CHANGE NO.	NAME		DRAWN BY	UNITS	MM	SALES BLOW UP DIAGRAM	DIAGRAM NO.	GGI-F001A--A	
2016.04.29	A1 為增加機台固定性, 新增(10R)	05-20151205M	鄭宜峰		VERIFIED BY	QTY	1			A981	
						VERSION	A1			MODEL	
						RATIO	1:9				