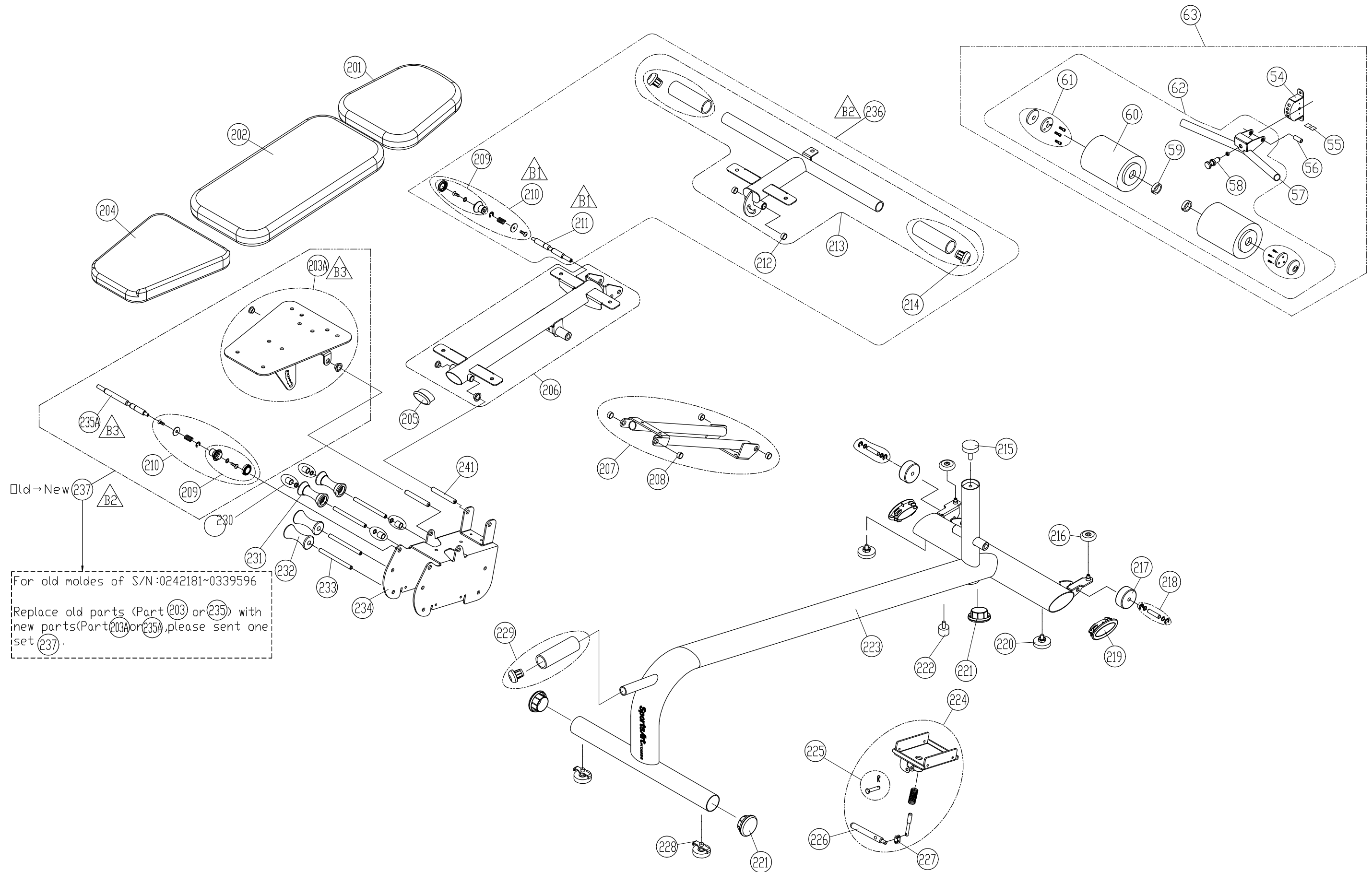


BBL	Description	QTY	Part Number	BBL	Description	QTY	Part Number
001	RUBBER CUSHION	1	A951-84	052	PULLEY BRACKET - SILVER	4	193-010-408
002	PULLEY BRACKET - SILVER	1	A93-02	053	AXLE	4	A93-53
003	AXLE	2	A93-03	054	CONNECTOR	1	A93-54
004	PULLEY WHEEL	7	A93-04	055	BUSHING	4	A93-55
005	BRACKET	1	A93-05	056	AXLE	1	A93-56
006	BELT ADJUSTMENT	1	A93-06	057	CUSHION FRAME - SILVER	1	A93-57
007	TOP WEIGHT PLATE	1	A93-07	058	ADJUSTABLE KNOB	1	A93-58
008	CORD BRACKET	1	A93-08	059	SPACER	2	A93-59
009	PIN	2	A911-44	060	CYLINDRICAL CUSHION - ORANGE	2	S931-219
010	STACK GUIDE ROD	2	A93-10	061	END CAP - GREY	2	193-691-630
011	SET FORK	1	A912-26	062	CUSHIONS & FRAME - SILVER	1	A93-62
012	14-POSITION TUBE	1	A93-12	063	CUSHIONS & FRAME ASSEMBLY - SILVER	1	A93-63
013	5KG WEIGHT PLATE	13	A93-13	064	HANDLE SET A	2	A93-64
014	WEIGHT STACK CUSHION	2	A911-48	065	HANDLE SET B	2	A93-65
015A	SELECTOR FORK - W/CORD	1	A911-50	066	FOOT STRAP	1	A93-66
016	COVER HARDWARE	7	A93-16	067	HANDLE SET C	2	A93-67
017	REAR COVER - UPPER	1	A93-17	068	HANDLE SET D	2	A93-68
018	COVER CONNECTOR	2	A911-061	069	CARABINEER	6	091-013-230
019	REAR COVER - LOWER	1	A93-19	070	RUBBER BALL (OLD)	6	091-031-023
020	REAR PLATFORM	1	A93-20	070A	RUBBER BALL	6	091-031-631
021	SCREW COVER	15	C570R-59	071A	STRENGTH CABLE - UPPER - (195.5")	1	A93-71
022	CENTER PLATFORM	1	A93-22	071R	SCREW - I/H (M4*P0.7*L4)	12	002-204-050
023	FRONT PLATFORM	1	A93-23	071S	STOPPER	3	S972-059
024	LEVELLER	2	A93-24	071T	BALL CONNECTOR	3	091-013-971
024A	LEVELER FOOT & NUT	2	C520U-27	072A	STRENGTH CABLE - LOWER - (185.4")	2	A93-72
025	END CAP	2	A93-25	074	SELECTOR FORK - NO CORD	1	190-591-530
026	LOWER FRAME - SILVER	1	A93-26	075	RETRACTING CORD	1	A911-51A
027	SWIVEL PULLEY	2	A93-27	076	A-SHAPED COVER ASSEMBLY UPGRADE	1	193-091-480
028	BUSHING	6	000-004-910	077	STRENGTH CABLE ASSEMBLY - UPPER	1	193-091-500
029	AXLE	6	A93-29	078	STRENGTH CABLE ASSEMBLY - LOWER	2	193-091-510
030	BUSHING	6	A93-30	087R	GROUND ANCHOR	2	197-210-050
031	SPACER	6	096-313-080	201	HEAD CUSHION - ORANGE	1	A93-201
032	RUBBER CUSHION	2	A971-44	201B	HEAD CUSHION - BLACK	1	A93-201B
033	AXLE	2	A93-33	202	BACK CUSHION - ORANGE	1	A93-202
034	PULLEY WHEEL	6	A93-34	202B	BOTTOM CUSHION - BLACK	1	A93-202B
035	LOWER FRAME ASSEMBLY - SILVER	1	A93-35	203A	SEAT CUSHION FRAME - SILVER	1	A93-203
036	AXLE	2	A93-36	204	SEAT CUSHION - ORANGE	1	A93-204
037	PULLEY WHEEL	6	A93-37	204B	SEAT CUSHION - BLACK	1	A93-204B
038	RUBBER FOOT	4	A911-10	205	END CAP	1	A911-27
040	PLASTIC PULLEY COVER	1	A93-40	206	BACK CUSHION FRAME - SILVER	1	A93-206
041	PULLEY COVER - SILVER	2	A93-41	207	SEAT FRAME SUPPORT - SILVER	1	A93-207
042	WASHER - (D20*D6.2*T5.0)	2	A93-42	208	BUSHING	4	A93-212
043	REAR SUPPORT FRAME - SILVER	1	A93-43	209	ADJUSTMENT KNOB	2	A93-209
044	BRACKET - HANGER	2	A93-44	210	ADJUSTMENT KNOB HEAD	2	A93-210
045	MAIN FRAME - SILVER	1	A93-45	211	PIN	1	A93-211
046	AXLE	2	A93-46	212	BUSHING	2	A93-212
047	PULLEY FRAME - SILVER	1	A93-47	213	HEAD CUSHION FRAME - SILVER	1	A93-213
048	PULLEY ASSEMBLY - SILVER	2	A93-48	214	END CAP & GRIP	2	A93-214
049	PULLEY ASSEMBLY - SILVER	2	A93-49	215	LEVELER	1	DF-101-159
050	PULLEY & BRACKET ASSEMBLY - SILVER	1	A93-50	216	GUIDE WHEEL	2	A93-216
051	PULLEY ASSEMBLY - SILVER	2	A93-51	217	TRANSPORT WHEEL	2	805P-57

BBL	Description	QTY	Part Number	BBL	Description	QTY	Part Number
218	TRANSPORT WHEEL AXLE	2	A93-218				
219	END CAP	2	A93-219				
220	LEVELLER	2	DF-102-028				
221	END CAP	1	8300-26				
222	STOPPER	1	A916-37				
223	MAIN FRAME - SILVER	1	A93-223				
224	CONNECTION BRACKET - SILVER	1	A93-224				
225	PIN & COTTER	1	A93-225				
226	ADJUSTMENT HANDLE	1	193-053-020				
227	CONNECTOR	1	A93-227				
228	LEVELLER	2	A93-24				
229	END CAP & GRIP	1	A93-229				
230	BUSHING	4	A93-230				
231	ROLLER - UPPER	2	A93-231				
232	ROLLER - LOWER	2	A93-232				
233	AXLE	5	A93-233				
234	SEAT CARRIAGE FRAME - SILVER	1	A93-234				
235	PIN (OLD)	1	A93-235				
235A	PIN (NEW)	1	093-013-342				
236	HEADREST FRAME - GREY	1	193-091-52K				
236.1	HEADREST FRAME - SILVER	1	193-091-52C				
237	SEAT FRAME - GREY	1	193-091-53K				
237.1	SEAT FRAME - SILVER	1	193-091-53C				
241	AXLE	1	093-013-310				
Z01	LUBE - 4X50CC	1	LUBE-03				



CHANGE DATE	CHANGE DESCRIPTION	CHANGE NO.	NAME	 RESTRICTED USAGE, PLEASE DON'T FORWARD TO ANYONE WHO ISN'T AUTHORIZED	DRAWN BY	UNITS	MM	SALES BLOW UP DIAGRAM	DIAGRAM NO.	GEC-F002A--B	
2016.04.22	(B3) (203) → (203A), (235) → (235A)	05-20160405M	鄭宜峰			QTY	1				A91
2015.01.06	(B1) (210) 增加螺絲, (211) 修改圖示		陳鈺濤			VERSION	B3	XX		MODEL	
2016.03.31	(B2) 新增組件 (236) (237)		林士文			RATIO	1:10				